

# MAC

METAL ARCHITECTURAL



## Installation guide

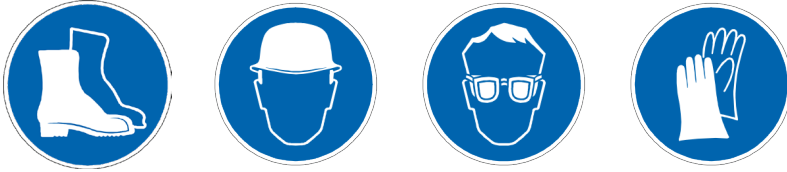
---

### **VERSA & METAL BLOCK PROFILES**

November 2020

## PROTECTION

The material may have sharp edges. We recommend using protective equipment, including safety boots, a helmet, goggles, and gloves.



## WARRANTY

FOR THE WARRANTY TO BE APPLICABLE, INSTALLATION MUST BE CARRIED OUT IN ACCORDANCE WITH THE STANDARDS SET OUT IN THE UPDATED BUILDING CODE, ALONG WITH THE MANUFACTURER'S RECOMMENDATIONS.

In the event that a problem occurs during the installation of the profiles, it's important to notify the supplier before the installation of 144 ft<sup>2</sup> (2 boxes), to make sure that the warranty will apply. Over 144 ft<sup>2</sup>, the responsibility for the installation lies with the installer.

## INSPECTION

When you receive your order, it is important to inspect the product immediately. If there are any issues with your order or if panels arrive damaged, you should inform your supplier as soon as possible.

## HANDLING

Handle the box with care, ensuring to move it only vertically.



## STORAGE

To keep the aesthetic and physical properties of MAC Metal Architectural Versa & Metal Block metal siding intact, it is important to follow some basic rules for storage.

If the panels cannot be installed immediately upon delivery, store them indoors in a dry, well-ventilated area. Customers are responsible for the risks involved with storing panels outdoors. However, if the material must be stored outside, here are a few recommendations:

Place the panels in an area with no direct exposure to the sun or to extreme temperatures, as these factors may cause the protective coating to further adhere to the panels. This can make the coating more difficult to remove and may leave glue marks on the panels.

We also recommend using a tarp to protect the materials from temperature fluctuations.

## PRODUCT TESTED

- Tested as per CAN/ULC-S135 for use in non-combustible constructions

## INSTALLATION WARNING



### « R SHEATHING »

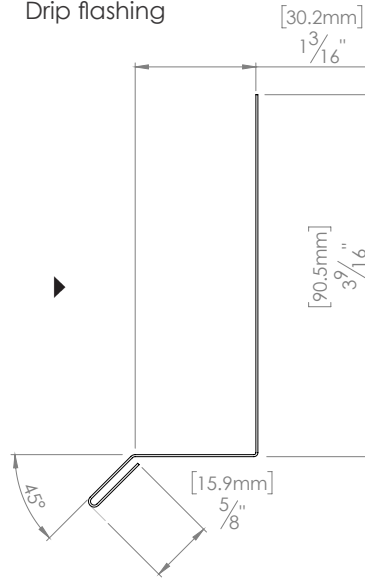
Installation of the MAC siding products on ZIP « R sheathing » panels and other dual composite panels with a softer material than wood is not recommended. This type of panel doesn't offer a good rigid mounting surface for MAC products and will allow for movement and deformation under varying weather and sun exposure transferring into oil canning.

## Versa & Metal Block TRIM & FLASHING

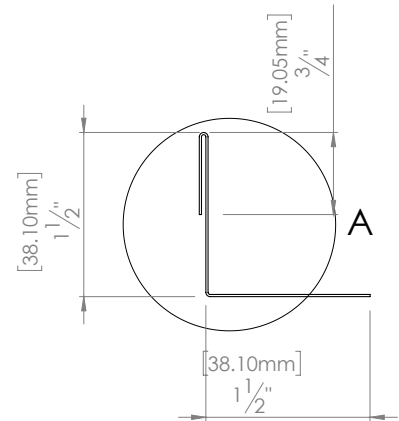
**No. M10G**  
Starter strip



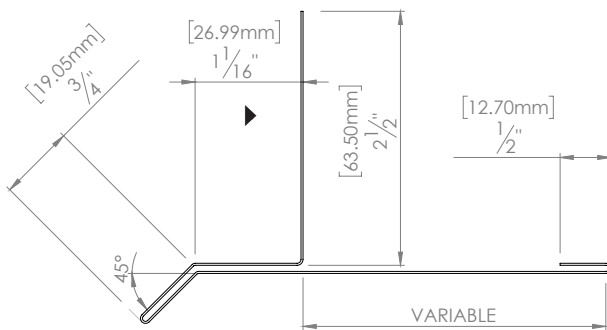
**No. M50G**  
Drip flashing



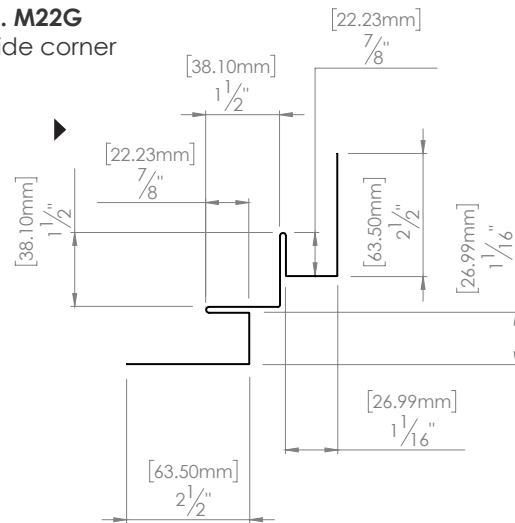
**No. M14G**  
L Trim



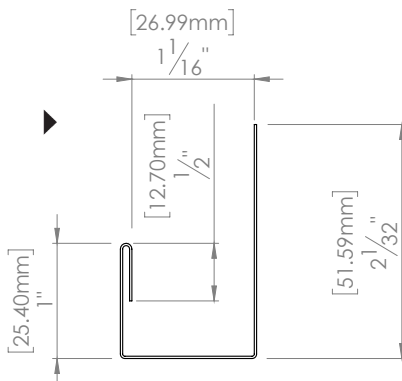
**No. M56G**  
Extended drip flashing w/ variable



**No. M22G**  
Inside corner



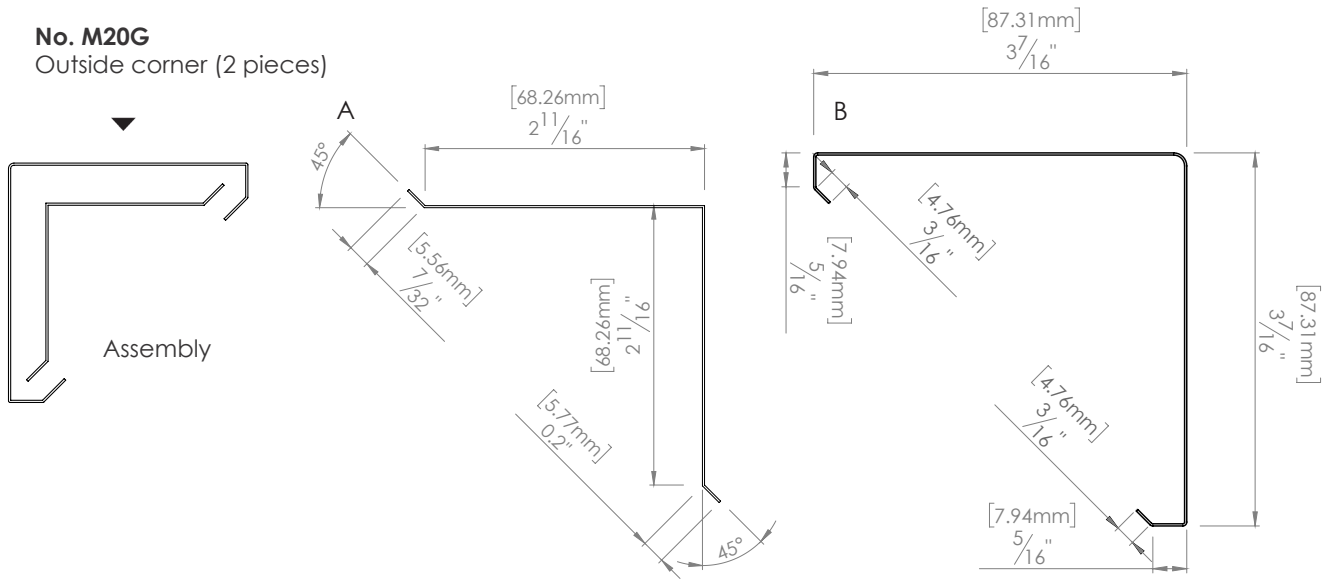
**No. M01G**  
J Trim



## Versa & Metal Block TRIM & FLASHING

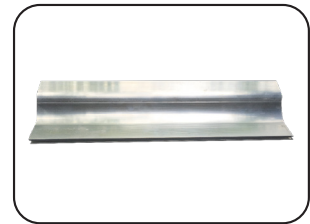
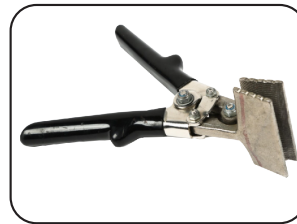
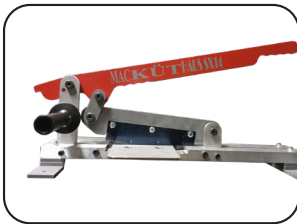
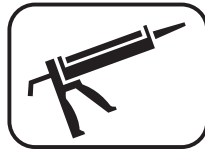
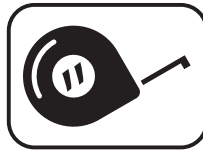
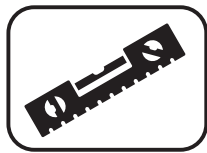
### No. M20G

Outside corner (2 pieces)



## 1. TOOLS

To complete the work correctly, you will require a MAC Metal Cutter (guillotine), a folding tool, a drill, and a pair of sheet cutters. You will also need a level, a tape measure and safety goggles. MAC Metal Architectural equipment is available at the MAC supplier nearest you.



## 2. ACCESSORIES

Here is the list of required accessories required for the installation of Versa and/or Metal Block profiles:

- MAC wood screws or metal screws depending on the type of project
- MAC Guillotine for Versa and Metal Block profiles
- Flat roll\*
- Moldings/Trims
- Sealer
- Anti-intrusion grid

\*Flat rolls can be provided by MAC for finishing work.

## Flashing and molding for Versa & Metal Block

### 3. PREPARATION

Before beginning the first step, ensure that the construction of the surface to be covered with Versa/Metal Block siding complies with all current industry standards.

Please check with your local authorities regarding the installation of metal or wood furring. If they are not needed, then it's okay not to install them.

---

### 4. INSTALLATION & RECOMMENDATIONS

Before installing the panels, make sure your walls are level.

#### ORIENTATION

The Versa/Metal Block panels may be installed horizontally, vertically, or diagonally on vertical, horizontal, and diagonal furs.

#### SEALANT

We recommend applying a fine line of MAC sealant starting from the 4th floor of any building exposed to severe weather or from the 2nd floor of a building located in risk areas.

In the case of a new wood building with more than one storey, it will be necessary to provide a transition molding on each floor; on a steel structure, install a transition molding every 30 ft. In the case of a very long wall, it is recommended to install a vertical transition molding every 30 ft.

\*Ensure immediate clean-up of excess sealant before it dries.

## 4.1 Starter Strip

### Step 1.

Before beginning the first step, ensure that the construction of the surface to be covered with Versa/Metal Block siding complies with all current industry standards.

Please check with your local authorities regarding the installation of metal or wood furring. If they are not needed, then it's okay not to install them.



### Step 2.

Install the starter strip, M10G, 3 1/2" above the point where your wall will be starting from. When specified or if necessary, install a drip molding beforehand. As needed, use MAC 1 1/2" flathead metal screws or MAC 1 1/8" flathead wood screws. You may now secure the first row with a first screw. When you are satisfied with the alignment, screw it into place.

\*\* Make sure that the first row is level because it serves as your guide for the rest of the installation.

### Vertical installation

It is important to install a drip molding, M50G, at the bottom of the wall. No starter strip is necessary in that case.



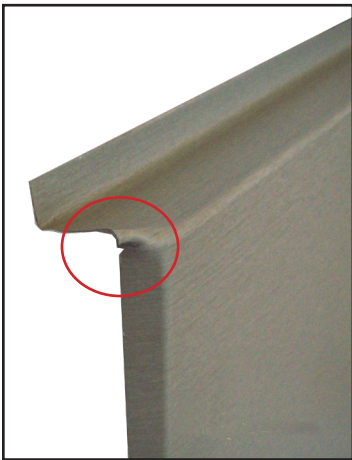


## 4.2 Strengthening the Panels

Strengthening the panels is mandatory only with 24 and 26-calibre panels, and optional with the 22-calibre panels.

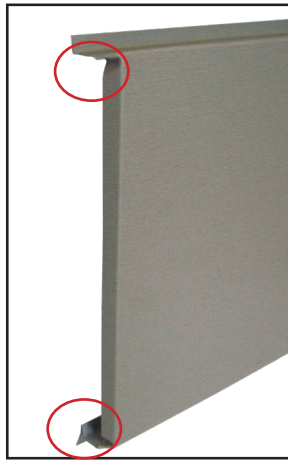
Before starting the panel installation, you will need to do a reinforcement ply with the MAC folding tool for Versa & Metal Block Profiles at the end of each plank. Make sure not to curve your planks.

1.



Cutting in the encircled areas

2.



3.



90° bending

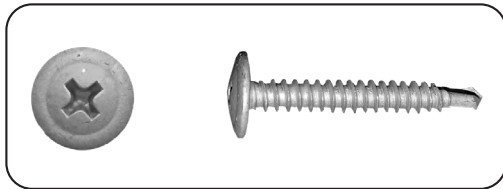
## 4.3 Plastic Wrap

If possible, remove the plastic wrap only once the panel is installed.

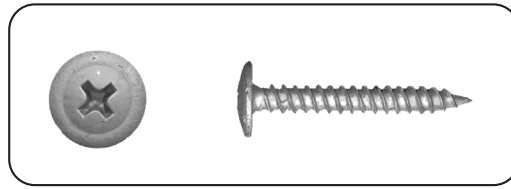


## 4.4 Screws

Drive the screws every 16 to 48 inches with moderate pressure on the metal. The screws should not exert pressure on the top or the bottom; otherwise, there may be deformation on the panel and/or joint spacing.



MAC Metal Screw



MAC Wood Screw



## 4.5 Cutting

If you need to cut the panels, use the specialized MAC Guillotine especially designed for Versa or Metal Block siding, recommended by MAC Metal Architectural. You can also use, if needed, a snip or a shear.

\*The use of an electric saw or an electric grinder is not recommended or covered by MAC Metal Architectural warranty.



## 5. INSIDE CORNER

### 5.1 Metal L Corner

Place a metal L corner or an elastomeric self-adhesive membrane directly on the weather blocker or on the furring.



### 5.2 Inside Corner Molding

#### Horizontal installation

Place the inside corner molding (M22G) under the metal L molding or the elastomeric membrane. Then continue with the installation of the coverings on the walls by carefully sliding the panels inside the molding while leaving a 1/8 in space.

#### Vertical installation

It is important to install an M50G drip moulding at the bottom of the wall. No starter strip is required.



## 6. OUTSIDE CORNER

MAC offers two options for outside corner moldings, namely moldings M20G or M21G.

The outside corner moulding (M21G) is installed exactly like the inside corner moulding but with an inverted fold. Refer to Step 5.2.

Moulding (M20G) is installed in two easy steps.

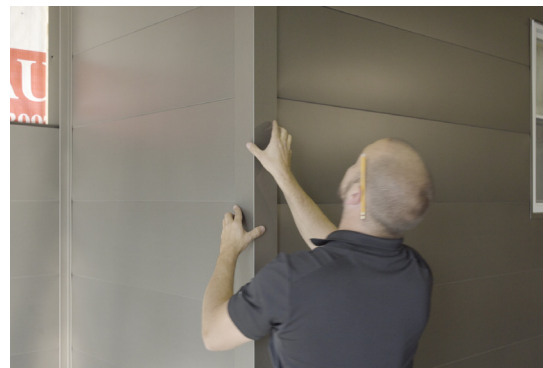
### 6.1 Step 1. Securing Strip

After installing the panels on the two walls to form a corner, install the securing strip with screws.



### 6.2 Step 2. Finishing Moulding

Apply MAC sealant (1 in L x ¼ in H) inside the finishing moulding before stapling it into place.



## 6.2 Step 2. Finishing Moulding

\*If you do not have a base, you will need to install the corner with a screw. Cut and fold back the bottom of the finishing molding so that you have an anchoring surface.



## 7. WINDOW FRAMING

### 7.1 Step 1. J Trim

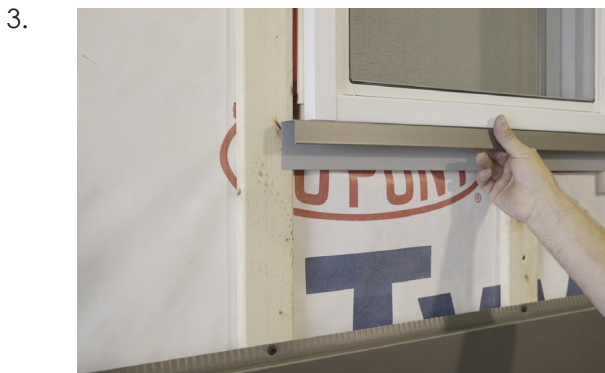
When the wall you are covering has a window, you first need to install the standard J Trim M50G on both sides and the bottom of the window. Then, install a drip cap above the window frame.





## 7.2 Step 2. Adjustments

1. Measure and adjust the panel as needed before installing it.
2. In case the panel need some adjustment, cut it to the necessary height.
3. Install the cut panel backwards in order to give it more strength.



## 7.3 Sides

Continue with the installation of the panels on each side of the window.



## 7.4 Top of the Window

We recommend installing a drip cap prior to putting the window's top plank into place.

In the case where the plank does not reach the full height, cut the plank with an extra  $\frac{1}{2}$  in to create a 180-degree fold. Then, install the cut panel backwards in order to provide more support. Then staple the folded panel into the cut one.



## 8. WALL TERMINATION

### 8.1 Adjustments

Measure the last panel in case the panel does not reach the full height and adjust it with electric shears. Install the trim panel backwards to give additional support to the cut panel.

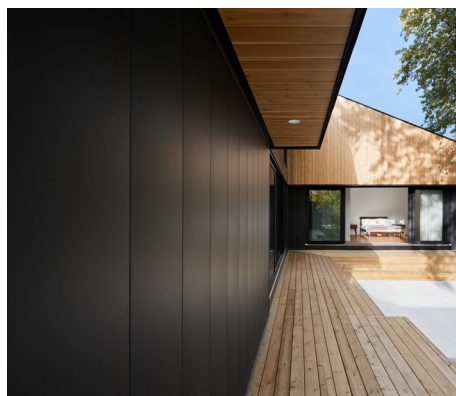
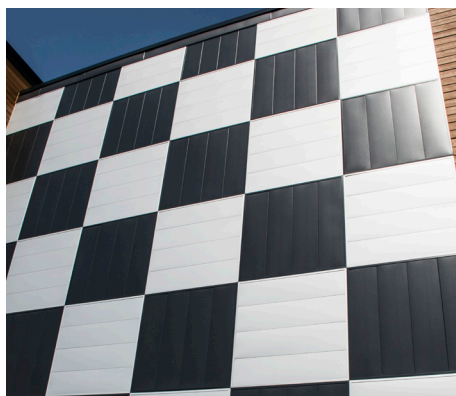


### 8.2 J Trim for soffit

Install the J Trim for soffit at the top of the wall. Then slide the soffit in place and screw it.







For more information on the installation of Versa or Metal Block profiles, visit the PRO section of our website, [MACmetalarchitectural.com](http://MACmetalarchitectural.com). You will find a bank of technical information on the profile such as a series of installation videos, molding booklets and access to technical drawings.

**MAC**  
METAL ARCHITECTURAL

MAC Metal Architectural  
3099, Bernard-Pilon (Quebec) J3G 4S5  
T. 450 464-5486 | T. F. 450 464-4538  
[info@macmetalarchitectural.com](mailto:info@macmetalarchitectural.com)  
[MACmetalarchitectural.com](http://MACmetalarchitectural.com)